


# CHART OF EFFECTS OF SPINAL MISALIGNMENTS

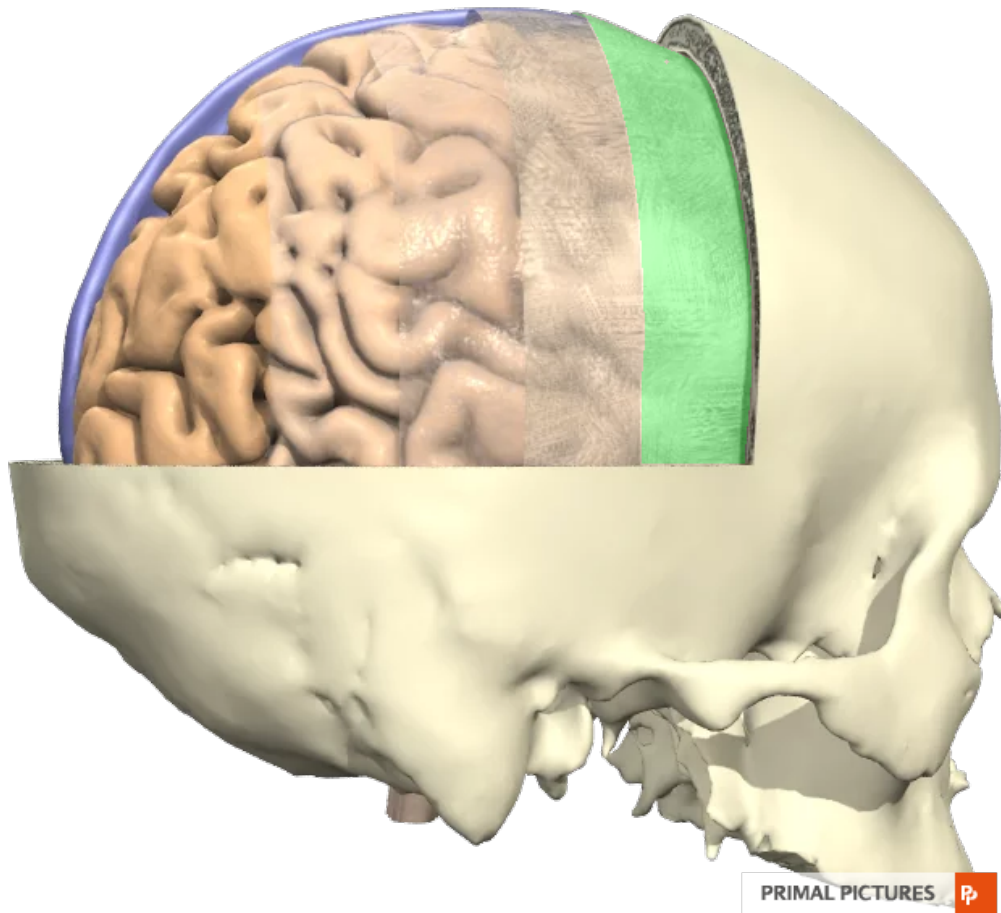
"The nervous system controls and coordinates all organs and structures of the human body." (Gray's Anatomy, 29th Ed. Page 4). Misalignments of spinal vertebrae and discs may cause irritation to the nervous system and affect the structures, organs, and functions which may result in the conditions below:



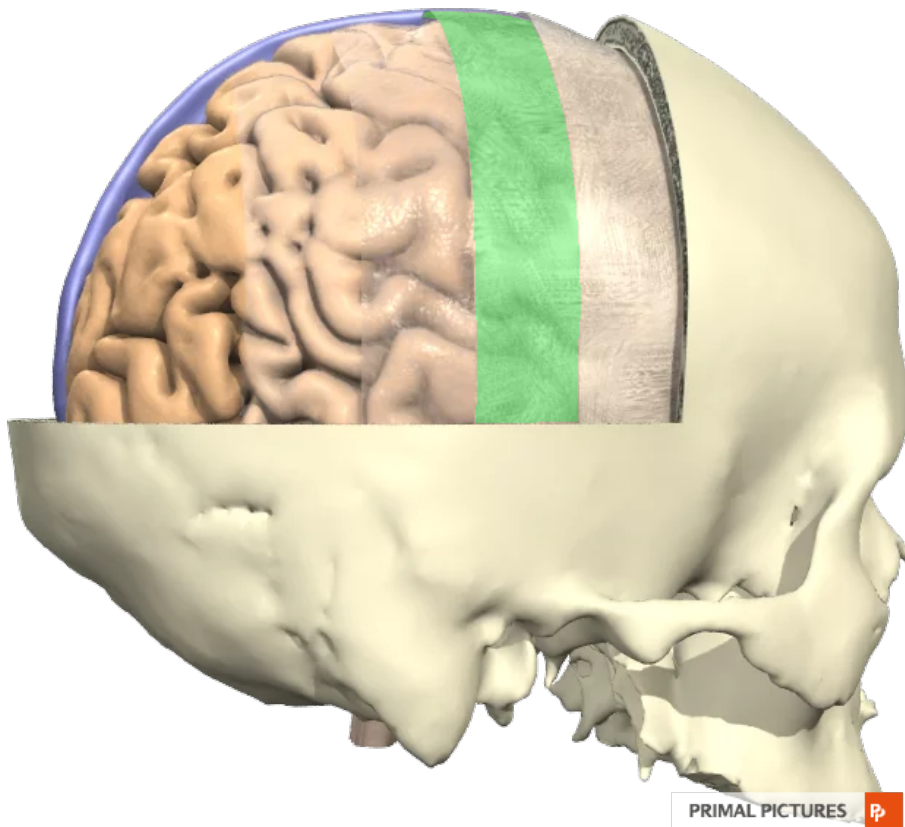
Vertebrae	Areas	Effects
C1	Blood supply to the head, pituitary gland, scalp, bones of the face, brain, middle ear, sympathetic nervous system	Headaches, nervousness, insomnia, head colds, high blood pressure, migraine headaches, nervous breakdowns, amnesia, chronic tiredness, dizziness.
C2	Eyes, optic nerves, sinuses, mastoid bones, tongue, forehead	Sinus trouble, allergies, crossed eyes, deafness, eye troubles, earache, fainting spells, certain cases of blindness
C3	Cheeks, outer ear, face bones teeth, trifacial nerve	Neuralgia, neuritis, acne or pimples, eczema
C4	Nose, lips, mouth, Eustachian tube	Hay fever, catarrh, hearing loss, adenoids
C5	Vocal cords, neck glands, pharynx	Laryngitis, hoarseness, throat conditions such as sore throat or quinsy
C6	Neck muscles, shoulders, tonsils	Stiff neck, pain in upper arm, tonsillitis, whooping cough, croup
C7	Thyroid gland, bursae in the shoulders, elbows	Bursitis, colds, thyroid conditions, headaches
T1	Arms from the elbows down, including hands, wrists and fingers; esophagus and trachea	Asthma, cough, difficult breathing, shortness of breath, pain i lower arms and hands
T2	Heart including its valves and covering, coronary arteries	Functional hear conditions and certain chest functions
T3	Lungs, bronchial tubes, pleura, chest, breast	Bronchitis, pleurisy, pneumonia, congestion, influenza
T4	Gall bladder, common duct	Gall bladder conditions, jaundice, shingles
T5	Liver, solar plexus, blood	Liver conditions, fevers, low blood pressure, anemia, poor circulation, arthritis
T6	Stomach	Stomach troubles including nervous stomach, indigestion, heartburn, dyspepsia
T7	Pancreas, duodenum	Ulcers, gastritis
T8	Spleen	Lowered resistance
T9	Adrenal and supra-renal glands	Allergies, hives
T10	Kidneys	Kidney troubles, hardening of the arteries, chronic tiredness, nephritis, pyelitis
T11	Kidneys, ureters	Skin conditions such as acne, pimples, eczema or boils
T12	Small Intestines, lymph circulation	Rheumatism, gas pains, certain types of sterility
L1	Large intestines	Constipation, colitis, dysentery, diarrhea, some ruptures or hernias
L2	Appendix, abdomen, upper leg	Cramps, difficult breathing, acidosis, varicose veins
L3	Sex organs, uterus, bladder, knees	Bladder troubles, menstrual troubles such as painful or irregular periods, miscarriages, bed-wetting, impotency, change of life symptoms, many knee pains.
L4	Prostate gland, muscles of the lower back, sciatic nerve	Sciatica, lumbago, difficult, painful or too frequent urination, backaches
L5	Lower legs, ankles, feet	Poor circulation in the legs, swollen ankles, weak ankles and arches, cold feet, weakness in the legs, leg cramps
Sacrum	Hip bones, buttocks	Sacro-iliac conditions, spinal curvatures
Coccyx	Rectum, anus	Hemorrhoids (piles), pruritis (itching), pain at end of spine or sitting

For further explanation of the conditions shown above, and information about those not shown, ask your Doctor of Chiropractic.

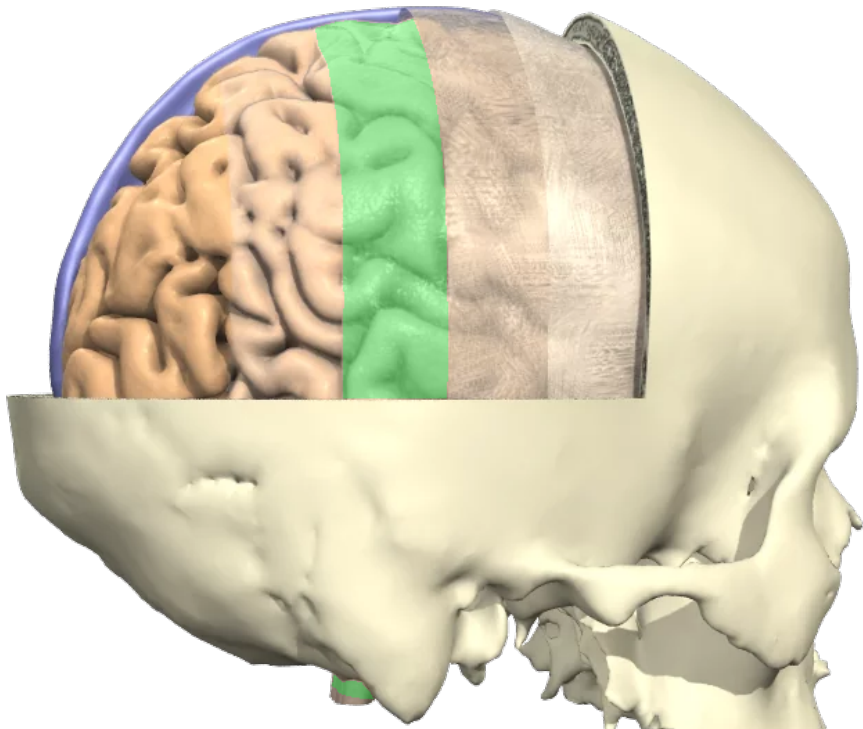
Eagle Chiropractic Health & Wellness Circle  
 Dr. Nada Luburic  
 1235 Trafalgar Road, Suite 413  
 Oakville, ON L6H 3P1  
 905-337-7047




**Periosteal Layer**

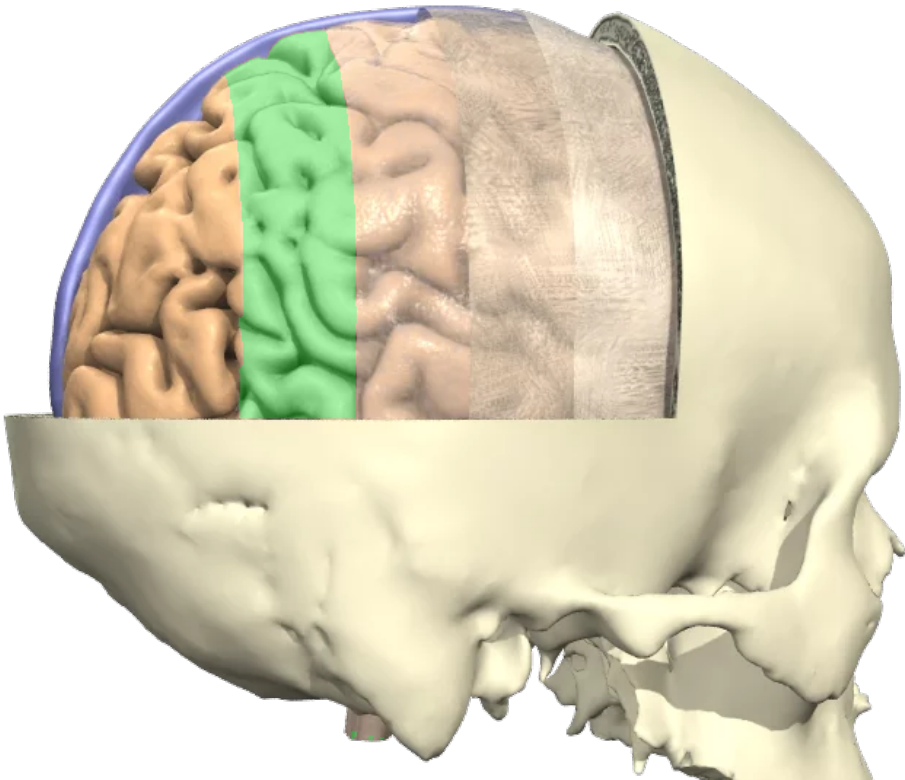


**Dura Mater**



PRIMAL PICTURES 

**Arachnoid Mater**

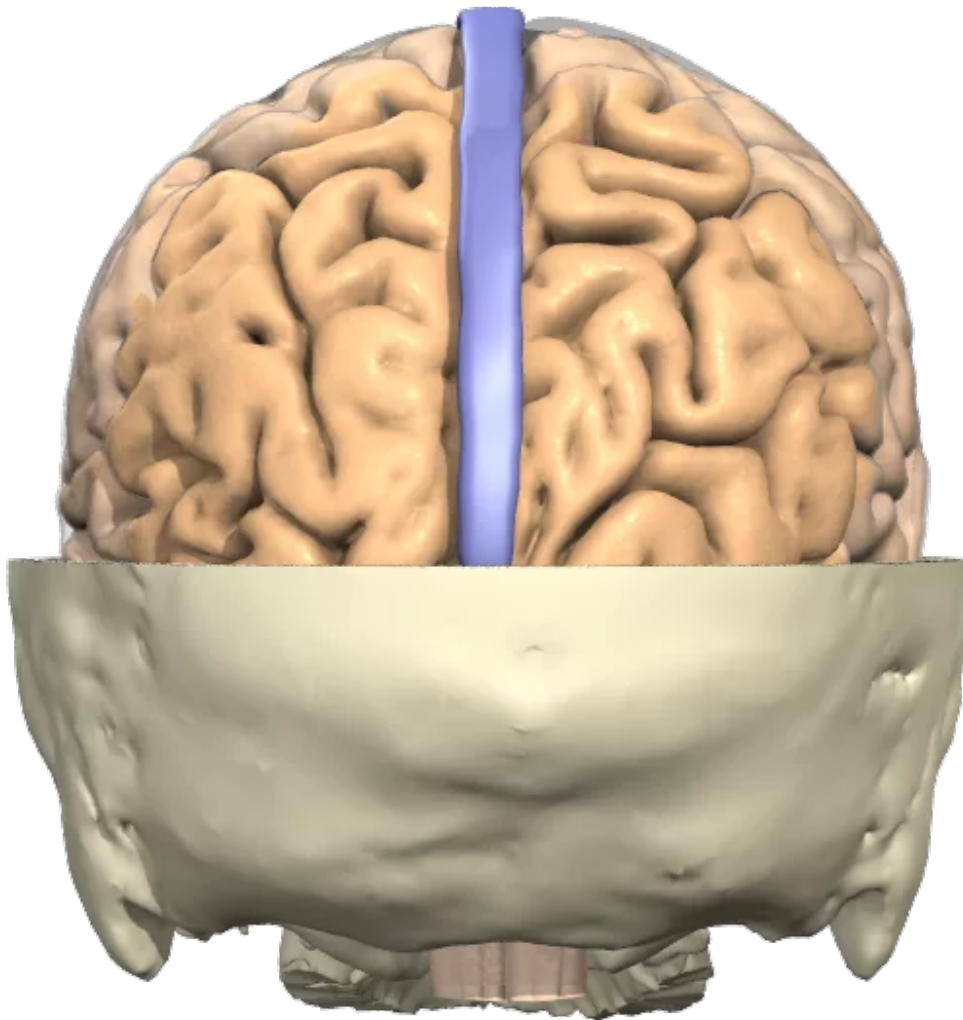


PRIMAL PICTURES 

**Pia Mater**

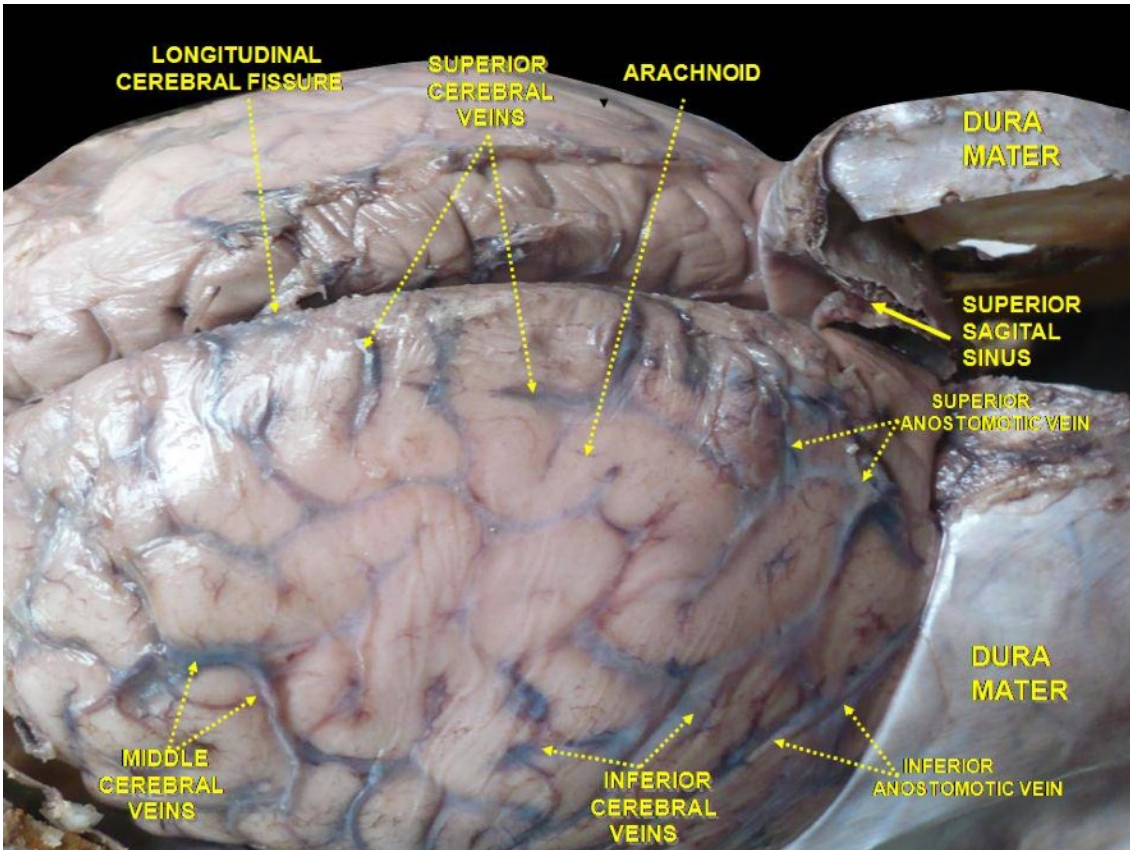
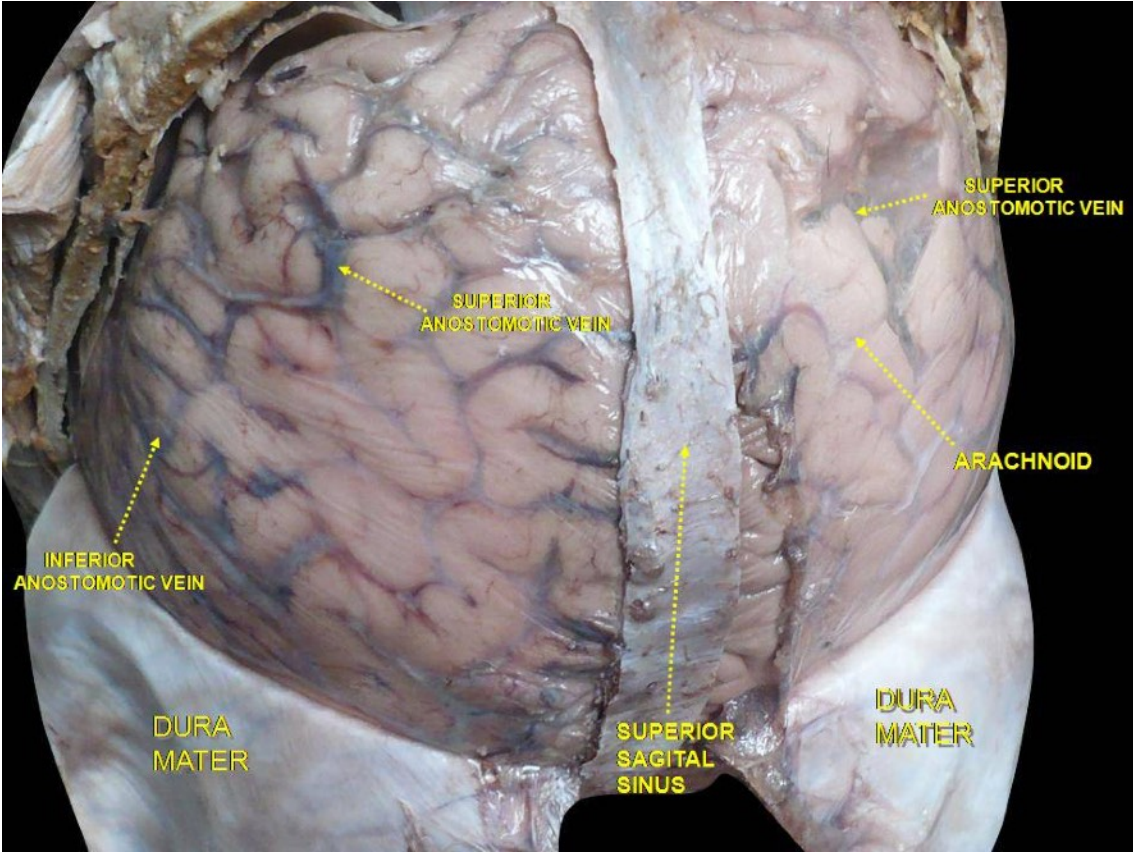


## Superior Sagittal Sinus



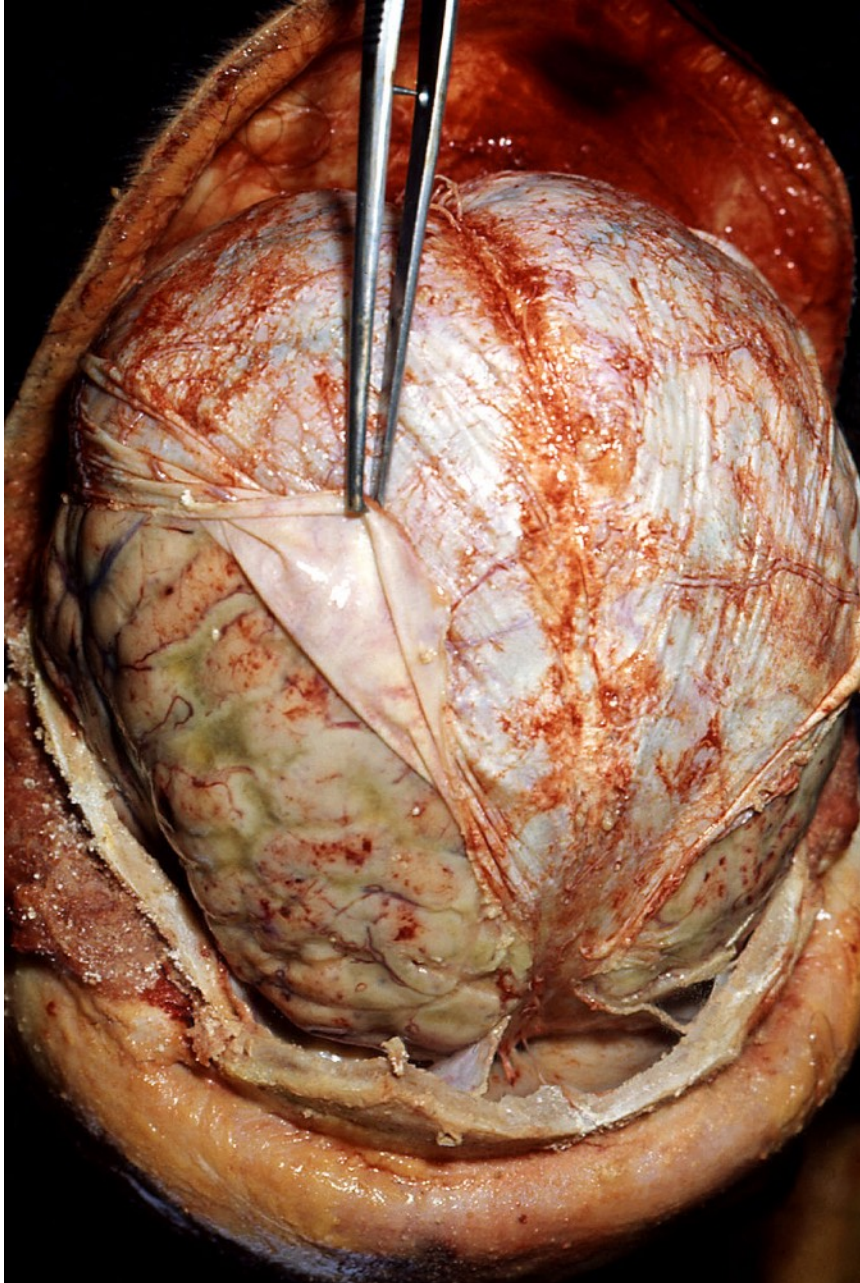
PRIMAL PICTURES







## Reflecting Dura Mater



# Flow of Cerebrospinal Fluid

